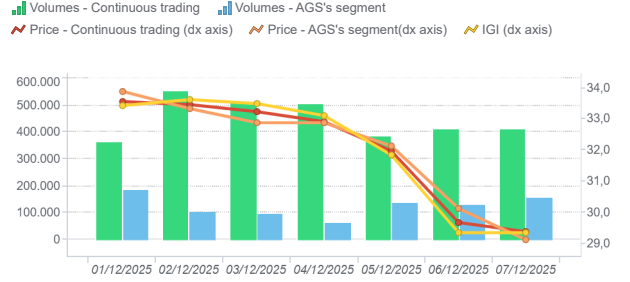


Day-Ahead Gas Market (MGP-GAS)

	Average price (€/MWh)	Change Price	Minimum price	Maximum price	Total Volumes (MWh)	Volumes change	Daily product	WE Product	WD Product
Continuous trading	31,98	-4,7%	27,62	34,40	3.174.984	-13,2%	2.471.616	642.288	61.080

	Average price (€/MWh)	Change price	Minimum price	Maximum price	Total Volumes (MWh)	Volumes change	Purchases SRG (MWh)	Sales SRG (MWh)
AGS's segment	32,06	-4,0%	29,12	33,89	857.664	-26,4%	857.664	0

MGP - Volumes (MWh) and Price (€/MWh)

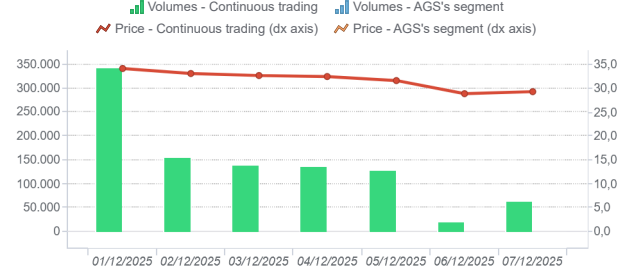


Intra-Day Gas Market (MI-GAS)

	Average price (€/MWh)	Change Price	Minimum price	Maximum price	Total Volumes (MWh)	Volumes change
Continuous trading	31,81	-5,4%	28,80	34,94	973.872	-15,0%

	Average price (€/MWh)	Change price	Minimum price	Maximum price	Total Volumes (MWh)	Volumes change	Purchases SRG (MWh)	Sales SRG (MWh)
AGS's segment	-	-	-	-	-	-	-	-

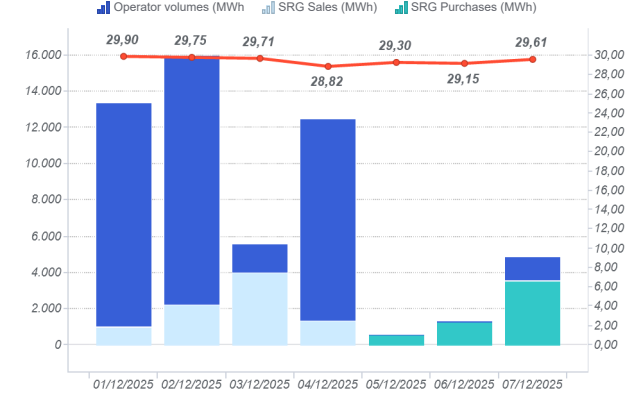
MI - Volumes (MWh) and Price (€/MWh)



Market for the trading of gas stored (MGS-GAS)

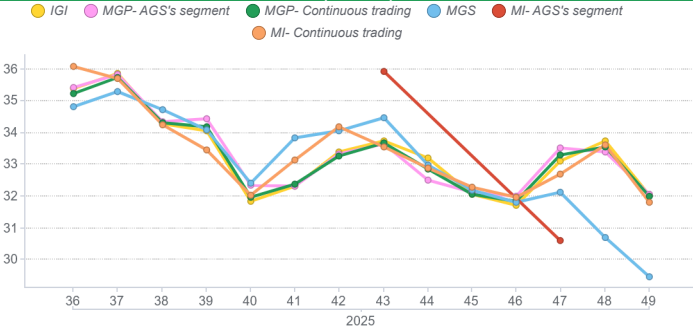
	Week 48	Week 49
Price €/MWh (1)		
Stogit	30,69	29,46
Stogit Adriatica	-	-
Total	30,69	29,46
Volumes MWh		
Stogit	146.851	53.725
Stogit Adriatica	0	0
Totale	146.851	53.725
SRG. Activity MWh		
Purchases	9.273	5.202
Balancing (2)	9.273	5.202
Other purchases (3)	-	-
Sales	22.105	8.309
Balancing (2)	22.105	8.309
Other purchases (3)	-	-

Market for the trading of gas stored (MGS-GAS)

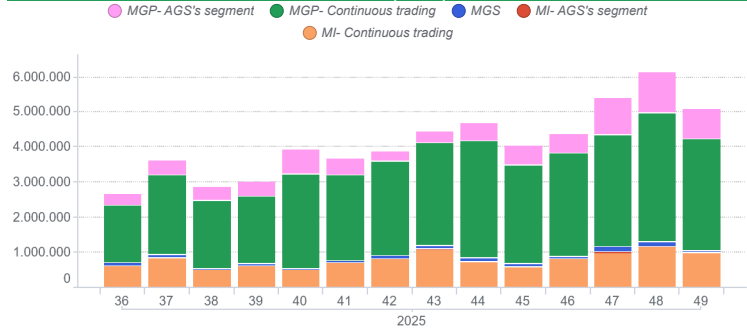


1) The Total price is calculated as a weighted average price for the total volumes exchanged in each storage system.
 2) To securely manage any expected deviations between overall network injections and withdrawals pursuant to Art. 2.5 of Annex A, AEEGSI's Resolution 312/2016/R/gas
 3) Stored gas trades by Snam Rete Gas (SRG) not included in "Balancing"

Prices (€/MWh)



Volumes (MWh)



Forward Gas Market (MT-GAS)

Prodotto	Minimum price (€/MWh)	Maximum price (€/MWh)	Check price*	Check price change (%)	Trades	Volumes (MWh/g)	OTC Registrations	OTC Volumes	Volumes Tot	Change %	Open position (MWh)*	Open position (MWh/g)*
BoM-2025-12			31,48	-0,2%	0,00	0,00	0,00	0,00	0,00	0,0%	0,00	0,00
M-2026-01			30,21	-6,7%	0,00	0,00	0,00	0,00	0,00	0,0%	0,00	0,00
M-2026-02			30,66	-4,9%	0,00	0,00	0,00	0,00	0,00	0,0%	0,00	0,00
M-2026-03			30,95	0,0%	0,00	0,00	0,00	0,00	0,00	0,0%	0,00	0,00
Q-2026-01			31,13	-2,7%	0,00	0,00	0,00	0,00	0,00	0,0%	0,00	0,00
Q-2026-02			31,90	0,0%	0,00	0,00	0,00	0,00	0,00	0,0%	0,00	0,00
Q-2026-03			28,49	-5,4%	0,00	0,00	0,00	0,00	0,00	0,0%	0,00	0,00
Q-2026-04			29,71	-5,2%	0,00	0,00	0,00	0,00	0,00	0,0%	0,00	0,00
SS-2026			30,30	-5,3%	0,00	0,00	0,00	0,00	0,00	0,0%	0,00	0,00
WS-2026/2027			31,67	-5,2%	0,00	0,00	0,00	0,00	0,00	0,0%	0,00	0,00
CY-2026			29,07	-4,3%	0,00	0,00	0,00	0,00	0,00	0,0%	0,00	0,00

*Referred to the last session of the week